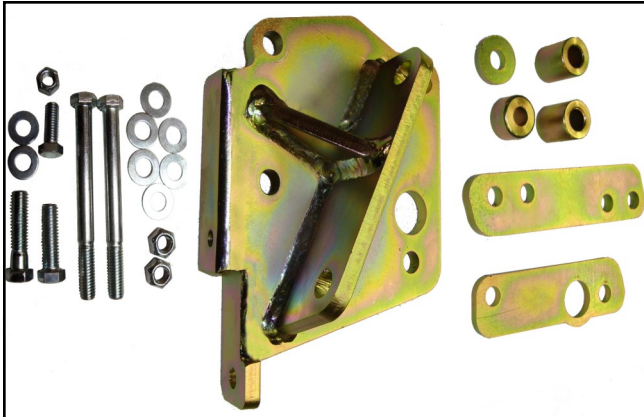




MOUNTAIN OFF ROAD ENTERPRISES LLC.
P O BOX 690 DELTA, COLORADO 81416
(877)JEEP-A2Z or (877)533-7229
Ph: 970-625-0500 970-625-3747 Fax
E-MAIL: info@mountainoffroad.com
www.mountainoffroad.com

INSTRUCTIONS FOR M.O.R.E.™ SB8795-1 Steering Box Bracket H.D.

Please read Terms/Policies on page 3 before installing



CONTENTS of KIT:

Qty:	Description:
1	Bracket-Steering Box H.D.
1	3/8" offset plate
1	1/4" plate spacer
1	1/4" round spacer
2	1 1/4" spacers
1	3/4" spacer
2	7/16" x 4 1/2" Bolts
1	7/16" x 1 3/4" Bolt
1	7/16" x 1 1/2" Bolt
6	7/16" flat washers
2	7/16" lock nuts
1	3/8" x 1" bolt
1	3/8" lock nut
2	3/8" flat washers

Please read all instructions before installing.

This Steering Box Bracket H.D. (Heavy Duty) is designed to fit 1987-1995Jeep® YJ Wrangler vehicles and will move the steering gear forward 1". **Depending on the type of steering shaft your Jeep has , it may be necessary to replace or modify the steering shaft (see figure 7).** Please read and understand all instructions before installing. Due to the fact that this bracket is over 300% stronger than the stamped steel factory bracket, the stress loads of large tires will be transferred directly to the frame. Because of the strength of this bracket, your frame should be checked often for signs of cracking and stress.

FIT and TOLERANCES: This kit is the result of countless hours of research, testing, fitting and refining. Jeep® frames have a wide tolerance on bolt hole centers from frame to frame. In addition to the factory tolerances, most people install other then factory equipment (i.e.: steering gear boxes, bumpers, springs, winches, shackle reversal systems, etc.) M.O.R.E.™ has done the best job we can to insure that this part fits with several of the possibilities. However, you may find it necessary to modify (i.e.: grind, elongate, bend, or force) the parts in this kit, or other parts on your Jeep®, to fit on your rig. Please use common sense when installing these parts and understand that once you modify this part in any way, shape or form, it is not returnable.

- STEP 1:** Disconnect the power steering hoses, drag link and steering linkage. Remove steering box and bracket from frame. Retain factory bolts for use later. (See figure 1)
- STEP 2:** Install heavy duty bracket with factory bolts through the bottom of the bracket and 7/16" x 4 1/2" bolts with washers through top holes. (See figure 2)
- STEP 3:** Install 1/4" thick plate spacer as shown. (See figure 3)
- STEP 4:** Install 1/4" and 3/4" round spacers over threaded mounting holes as shown. (See figure 4)
- STEP 5:** **Loosely** install 3/8" thick offset plate as shown over spacers. Use the 7/16" x1 3/4" bolt with a washer through the 3/4" spacer and the 7/16" x 1 1/2" bolt with a washer through the 1/4" spacer. (See figure 5) We recommend using thread locker on all bolts.
- STEP 6:** Install steering box over the bolts sticking through the frame an heavy duty bracket. Install 7/16" washers and nuts onto bolts. (See figure 6)
- STEP 7:** Insert 1 1/4" spacers between the steering box and heavy duty bracket on the lower 2 holes and install factory bolts. (See figure 7) You may now tighten all hardware.
- STEP 8:** Install sway bar clamp onto lower side of heavy duty bracket using the factory bolt in the threaded hole and the 3/8" bolt, washers, and nut provided. (See figure 8)

STEP 9: Reinstall drag link, hoses , and steering linkage. It may be necessary to notch the bottom of the grille panel to accommodate the power steering hoses. (See white line in figure 9)

Final Notes: Start vehicle and turn wheels lock to lock several times to check for any signs of binding or unusual noises. Torque on all bolts should be checked after the first few hours of use and then periodically after that.

Figure 1

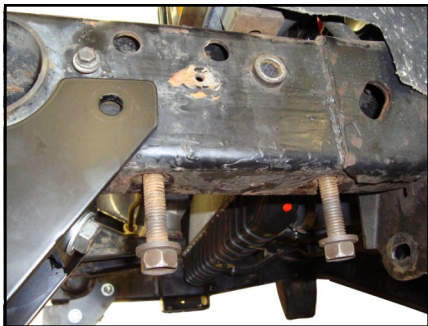


Figure 2



Figure 3

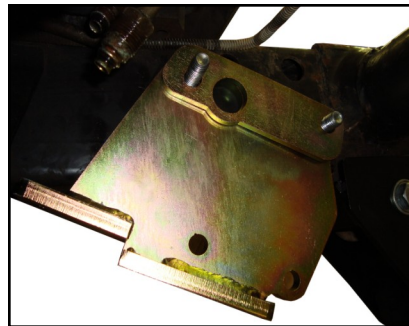


Figure 4

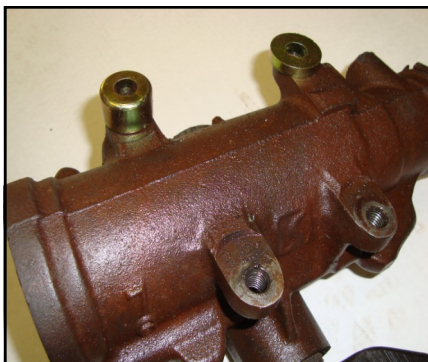


Figure 5



Figure 6



Figure 7

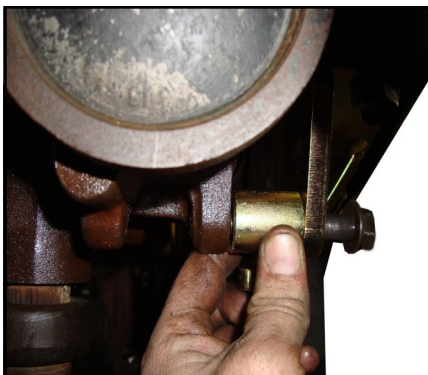


Figure 8

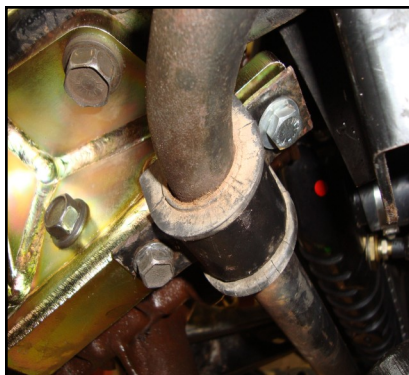


Figure 9



TERMS/POLICIES:

RETURNS: No returns will be accepted without prior permission from M.O.R.E.™ LLC. You must call for a Return Goods Authorization (RGA) number. Merchandise must be returned prepaid and insured. A claim must be made within 30 days from receipt of merchandise. The original invoice or a copy with the RGA number written on must accompany all returns. A 20% restocking fee will be charged on all parts returned for credit or refund unless merchandise is proven to be defective or was shipped wrong by M.O.R.E.™ LLC. No merchandise will be issued credit or refund if it has been installed, modified, used in any way or is in unsalable condition.

WARRANTY: All merchandise is warranted to be free from defects in materials and workmanship prior to installation. Any alteration or improper use will void this warranty. Because all parts we sell are intended for use in heavy-duty applications it is not possible to warrantee or guarantee the performance of any items. M.O.R.E.™ LLC. products and the products manufactured by others, which we sell may be subject to an infinite variety of conditions due to the manner in which they are used, serviced and/or installed. Purchasers and users of such products rely upon their own judgment as to the suitable use selection, service and installation of such products.

PRODUCT DISCLAIMER: Modification of your vehicle to enhance performance with parts sold by M.O.R.E.™ LLC. may create a dangerous condition which could cause serious bodily injury, and the buyer hereby expressly assumes all risks associated with any such modifications. All parts sold by M.O.R.E.™ LLC. are for racing or off road use only. Mountain Off Road Enterprises LLC. will not accept responsibility for personal injury or property damage arising from the failure of any parts manufactured or sold by M.O.R.E.™ LLC.

Specifications are subject to change without notice.

These instructions, and the M.O.R.E.™ logo are copyright©, 2000-2008.

